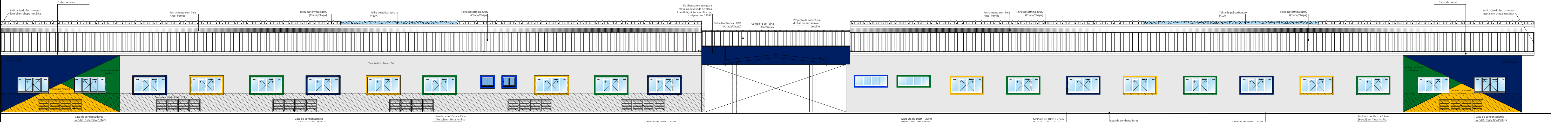
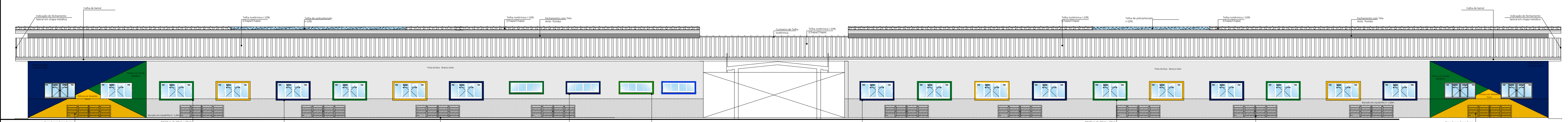


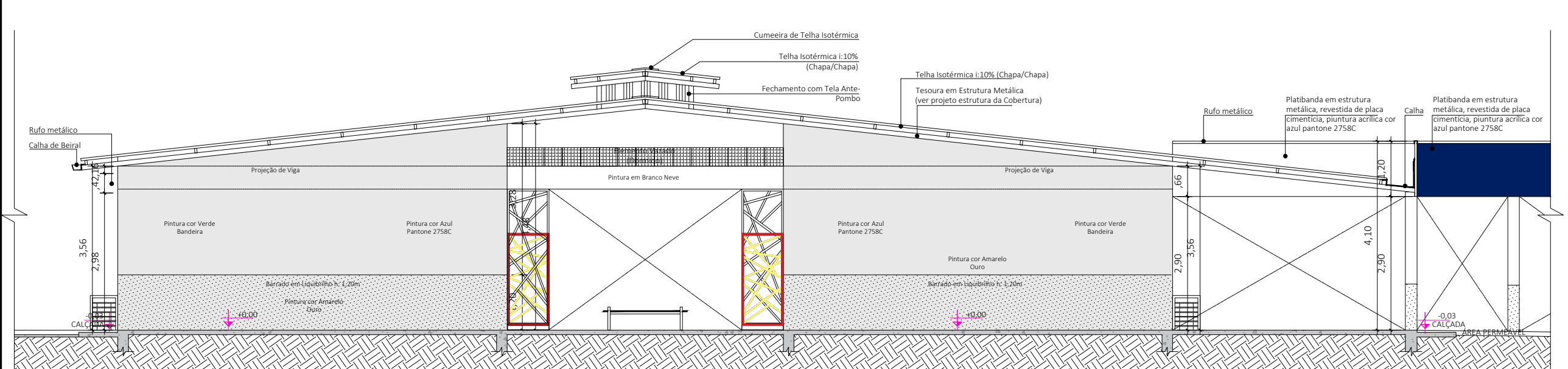
CORTE AA
ESCALA 1:125



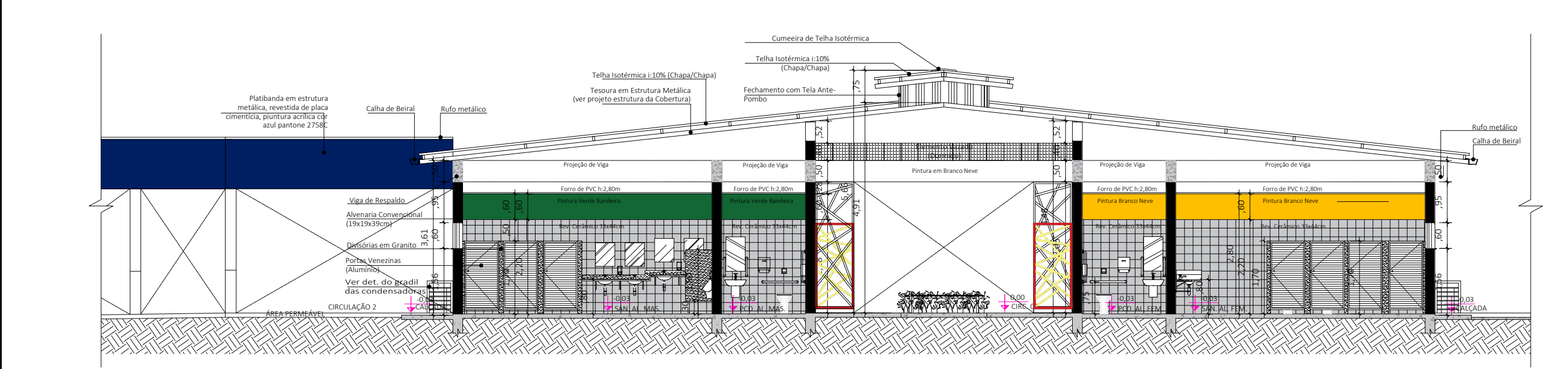
ELEVACÃO 01
ESCALA 1:125



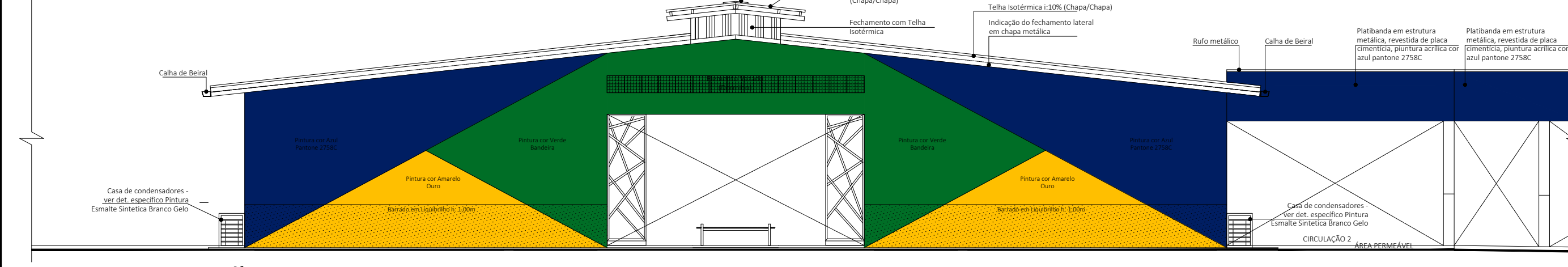
ELEVACÃO 03
ESCALA 1:125



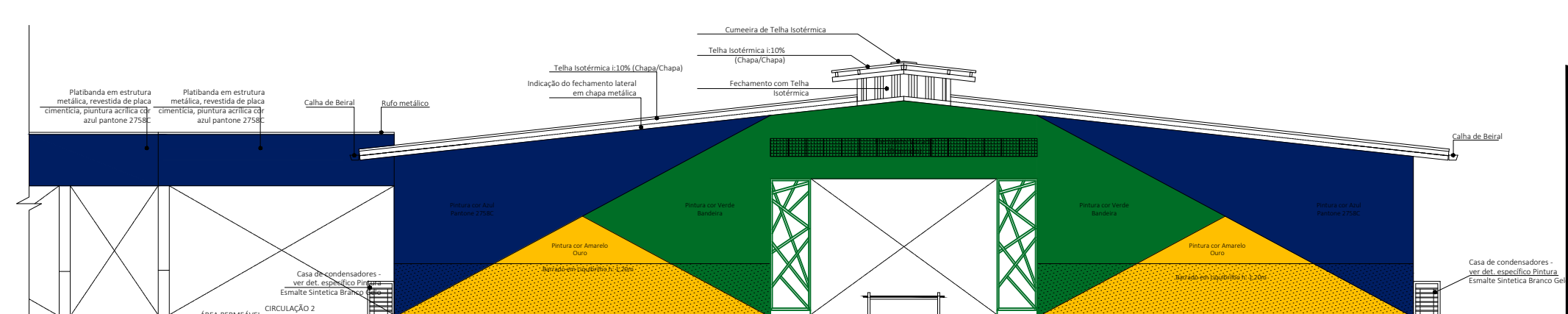
CORTE BB
ESCALA 1:100



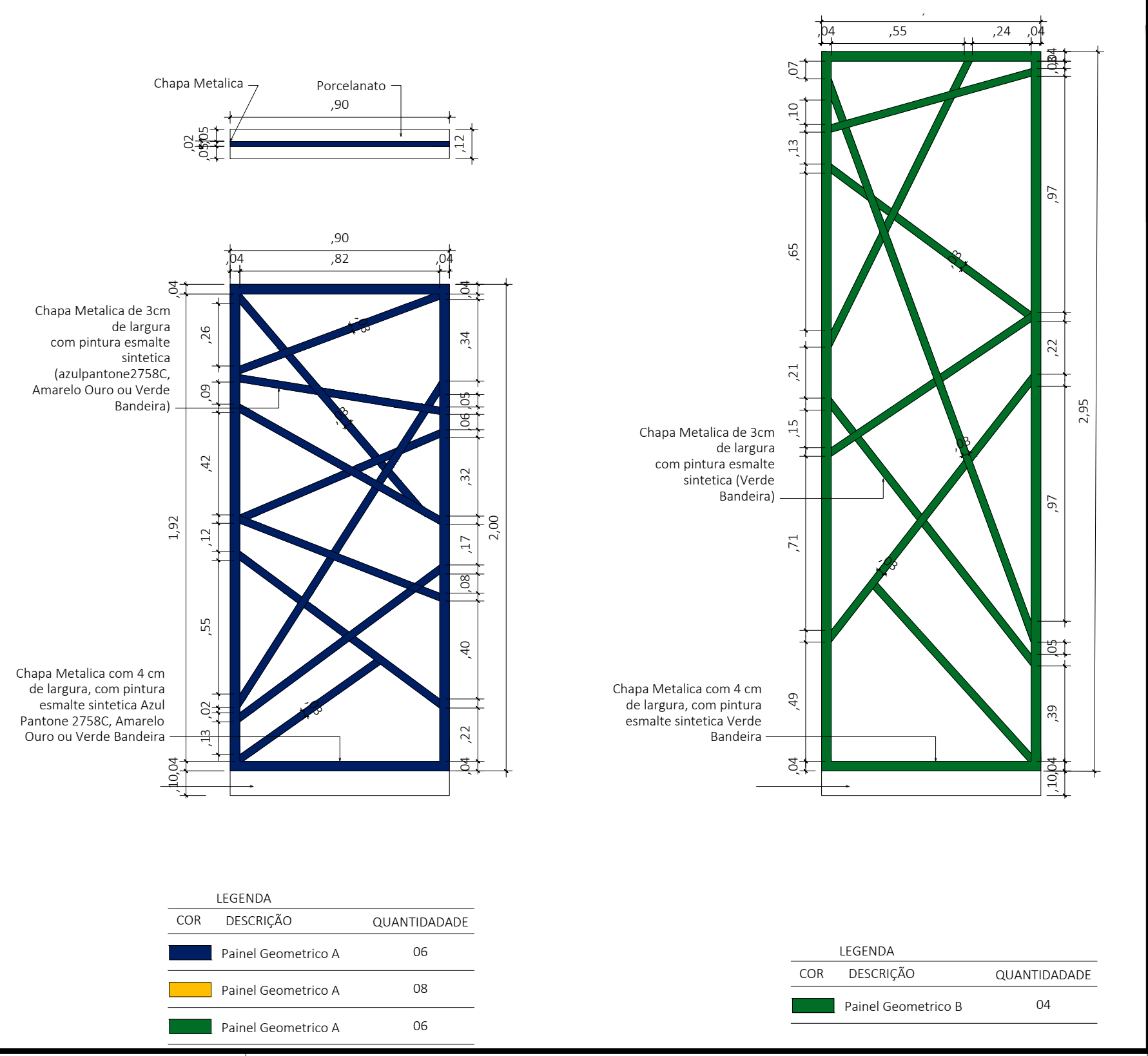
CORTE CC
ESCALA 1:100



ELEVACÃO 02
ESCALA 1:125



ELEVACÃO 04
ESCALA 1:125



CARIMBO

R00	DDIMMAA	EMIÇÃO INICIAL	DESCRIÇÃO
REVISÃO	DATA		

PROJETO ARQUITETONICO

OBRA: EDUCACIONAL ESCOLA ESTADUAL NOVA

PROPRIETÁRIO: PREFEITURA MUNICIPAL DE CHAPADAS DOS GUIMARÃES -MT
CPF/ CNPJ: 03507530/0001-19

ENDEREÇO: AVENIDA ARICA, CEP: 78195-00 CHAPADA DOS GUIMARÃES -MT

AUTOR DO PROJETO: CREA/ CAU: ENGª PATRICIA CARVALHO MILHOMEM DE ABREU
CREA: MT047574

RESP. P/ EXECUÇÃO: CREA/ CAU:

ESCALA: INDICADA	ASSUNTO: BLOCO EDUCACIONAL 16 SALAS * PLANTAS DE CORTES * PLANTA DE ELEVACOES * DETALHE	FOLHA Nº: ARQ 05/17
------------------	--	---------------------

NOME DO ARQUIVO DIGITAL: Escola Nova 16 Salas.dwg